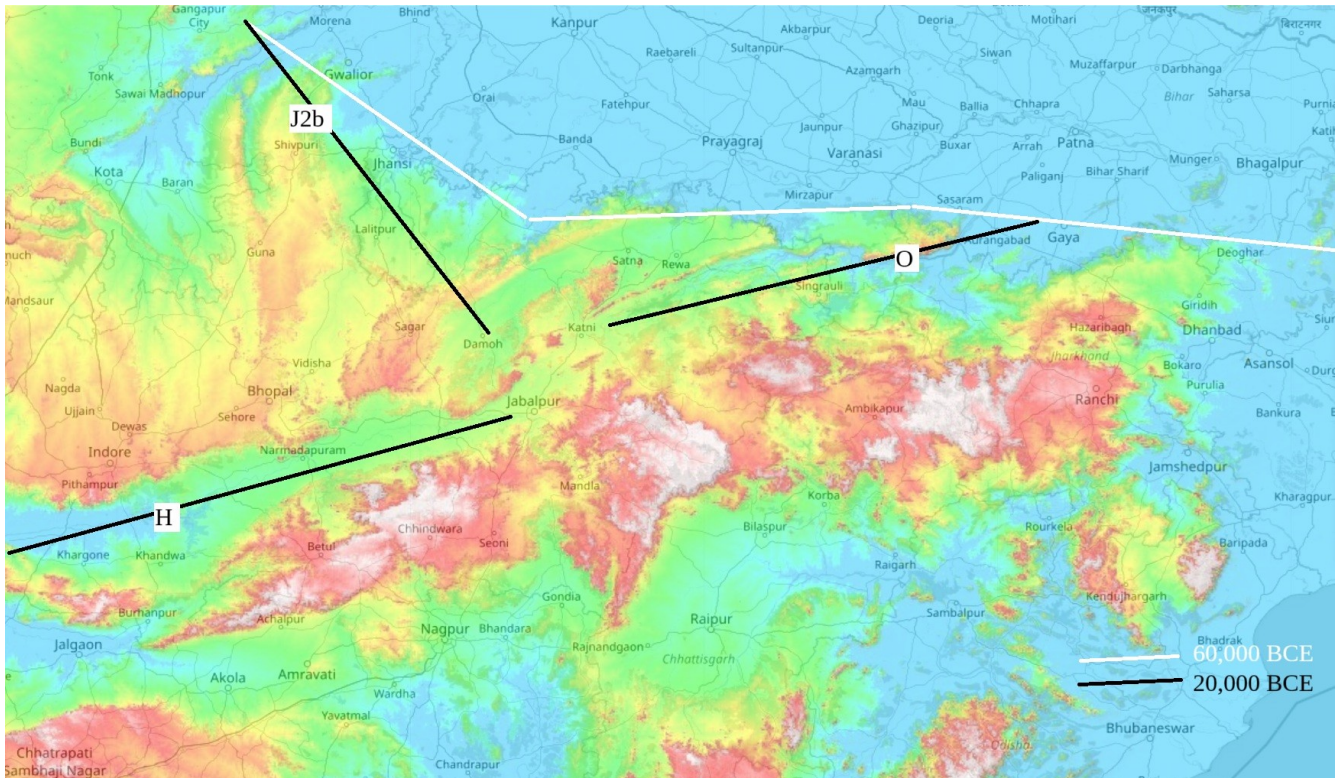


Satpura Range, an Archeological View

by Potluri Rao In Seattle ©2018 (CC BY 4.0)

The Satpura Range is a part of the Vindhyas. The west side of the Satpura called Trikuta consisted of the current Damoh, Jabalpur, and Katni districts of the Madhya Pradesh State. Three rivers Narmada, Ken, and Sone originated at the foot of a hill in the Trikuta. The DNA H, J2b, and O lived along the three perennial rainwater rivers.



Winds changed their direction every 20,000 years based on the earth's rotation called Precession. For 20,000 years winds blew from west to east. For the next 20,000 years, winds blew from east to west. The last reversion took place 4,000 years ago.

When the winds blew from west to east, the west side (Trikuta) was fertile lands and the east side was waste lands. When the winds blew from east to west, the east side was fertile lands and the west side was wastelands. At present winds blow from east to west. Twenty thousand years ago winds blew from west to east. About 4,000 years ago, all the people from the west side (Trikuta) were forced to move to the east side of the Satpura when their fertile lands turned into wastelands due to climate change.