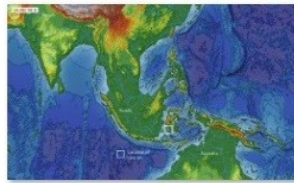
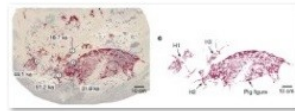




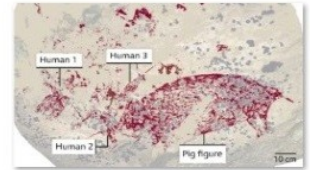
Ancient migration paths.jpg



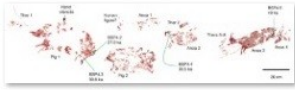
JPG 01.jpg



JPG 02.jpg



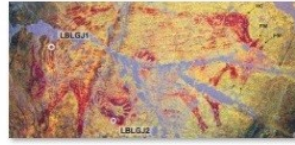
JPG 02B.jpg



JPG 03.jpg



JPG 04.jpg



JPG 05.jpg



JPG 06.jpg



Sulawesi cave art 01.jpg



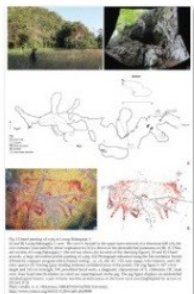
Sulawesi cave art 02.jpg



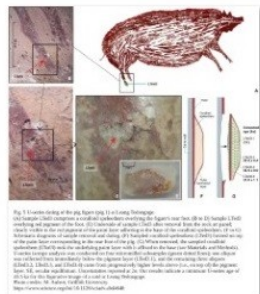
Sulawesi cave art 03.jpg



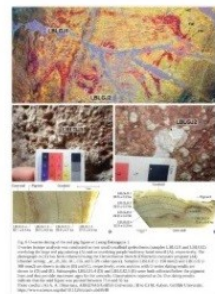
Sulawesi cave art 03B.jpg



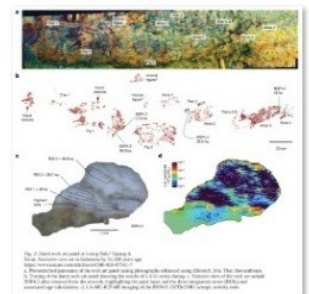
Sulawesi cave art 04.jpg



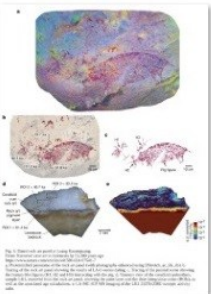
Sulawesi cave art 05.jpg



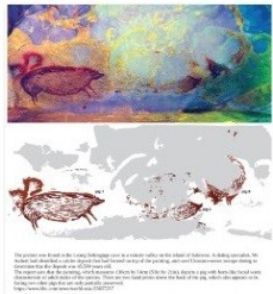
Sulawesi cave art 06.jpg



Sulawesi cave art 07.jpg



Sulawesi cave art 08.jpg



Sulawesi cave art 09.jpg



Sulawesi cave art 10.jpg



Sulawesi cave art 11.jpg



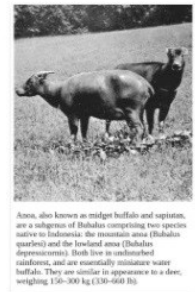
Sulawesi cave art 12.jpg



Sulawesi cave art 13.jpg



Sulawesi cave art 14.jpg



Sulawesi cave art 15.jpg



The Lowland Anoa lives only on the island of Sulawesi in Indonesia. It mainly lives in forested areas near water.

The Lowland Anoa eats the shoots and leaves of plants. It is the smallest member of the water buffalo family, but it still weighs over 150 kg.

Sulawesi cave art 16.jpg



A group of small dark pig-like animals, possibly a species of wild pig, is depicted in a naturalistic style. The animals are shown in profile, facing left. The painting is on a light-colored rock surface.

Photo: Adam Bruman

Sulawesi cave art 17.jpg



Another painting of an Anoa, apparently a male, in the same style, and possibly even by the same artist.

Photo: Adam Bruman

Sulawesi cave art 18.jpg



Painting of a wild pig at Leang Petakere.

Photo: Anthony Dosseto

Sulawesi cave art 19.jpg



A red pig-like animal, possibly a wild pig, is depicted in a naturalistic style. The animal is shown in profile, facing left. The painting is on a light-colored rock surface.

Photo: Marcus John

Sulawesi cave art 20.jpg



A dark pig-like animal, possibly a wild pig, is depicted in a naturalistic style. The animal is shown in profile, facing left. The painting is on a light-colored rock surface.

Photo: Marcus John

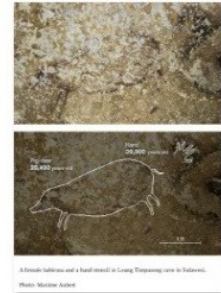
Sulawesi cave art 21.jpg



A pig-like animal, possibly a wild pig, is depicted in a naturalistic style. The animal is shown in profile, facing left. The painting is on a light-colored rock surface.

Photo: Adam Bruman

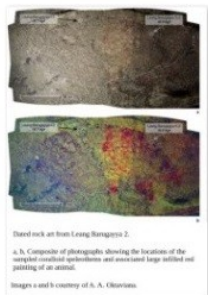
Sulawesi cave art 22.jpg



A wild pig and a hand stencil are depicted in a naturalistic style. The pig is shown in profile, facing left. The hand stencil is a simple outline of a hand. The painting is on a light-colored rock surface.

Photo: Marcus John

Sulawesi cave art 23.jpg



Chased rock art from Leang Mangrove 2.

a. b. Composite of photographs showing the locations of the complete animal pig-like animals and associated large red ochre painting of an animal.

Images a and b courtesy of A. A. Chionina

Sulawesi cave art 24.jpg



Sus_celebensis (Sulawesi pig) painted 1845.jpg