

DNA Version of Human History, an Archeological View

by Potluri Rao In Seattle ©2018 (CC BY 4.0)

An analysis of DNA samples of the Indian populations revealed that the current version of human history is based on a set of false assumptions.

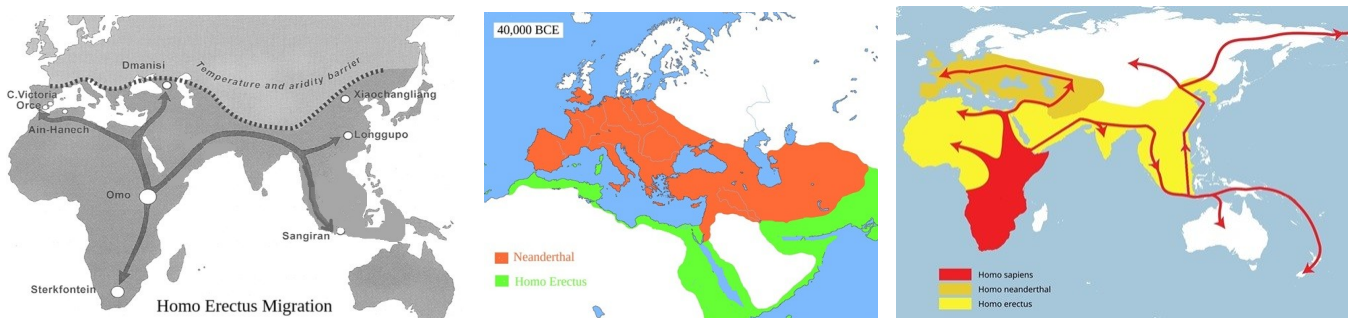
The DNA samples have a consistent and coherent story of the human history that is empirically verifiable.

Homo Erectus (upright, bipedal, ape-like) evolved in Africa more than one million years ago. Homo Neanderthal and Homo Sapiens evolved much later. There were dozens of other variations that are now extinct. Only the Homo Sapiens survived.

Homo Sapiens, the modern humans, who share the same DNA are called a Haplogroup. Haplogroups are categorized from A to Z. They are sub categorized into hundreds. The broad categories that are of interest to us are: A, B, C, E, F, and R1.

Homo Sapiens are broadly classified as Clades depending on their migration paths: (1) Africa (A, B), (2) Nile (E), (3) Asia (C, F), and (4) Europe (R1).

The four Clades were separated 100,000 years ago, and evolved as independent classes with their own distinct culture. Culturally, they had nothing in common except their human form that permitted interbreeding.



The above maps show distribution of the Homo Erectus, Neanderthal, and Sapiens. In the olden days, much of the world was covered with glaciers and the seawater was far below the current levels. The current landscape came into existence only after the glacial melt of 20,000 years ago. We recreated the ancient landscape by artificially lowering the sea levels using computer simulations based on altitude data.

Homo Erectus were warm climate people, and lived only in the Tropical Zone. They are now extinct. Neanderthal were cold climate people. They lived only in the Temperate

Zone, to the north of Tropic of Cancer. They became extinct some time after 40,000 BCE.

Homo Sapiens, the modern humans, came into existence around 200,000 years ago. They lived mostly in South Africa. Around 100,000 years ago, they started to move out and were split into four Clades. They followed the old migration paths of the Erectus and Neanderthal.

The Europe Clade were cold climate people and followed the Neanderthal migration route. The other three Clades were warm climate people and stayed to the south of Tropic of Cancer, just like the Erectus.

The warm climate people lived only along dependable perennial rainwater resources with abundant year round food supplies. They were mostly vegetarians with occasional meat supplements. They were compassionate peace loving people who lived in peace and prosperity with abundant natural resources. They were logic based explorers and pioneers who scouted for life sustaining rainwater resources. They occupied the entire land from Africa to China. They were culturally very advanced. They painted the Sunda caves with superb artwork 60,000 years ago.

The cold climate people, the Europe Clade, evolved to be meat eaters to survive the cold days with no vegetarian food available. They evolved to be hunters and gatherers. They invented stone tools to hunt big animals that supplied food for long periods of time, preserved in natural refrigeration. They evolved into rival packs that were constantly at war to rob each other for the scarce food resources. They invented the concepts of King, War, Weapons, and God.

The warm climate people never had the need for the concepts of King, War, or God. They were compassionate and peace loving people who helped each other as one giant family and lived in harmony. They had no need for stone tools to hunt big game. They caught small animals like the Sulawesi pigs, painted in the caves, with sticks and ropes. Culturally, they were the exact opposite of the Europe Clade (R1).

The cold climate people matured into modern cultures only after the glacial melt opened a swath of land for human occupation. It is the current Europe, also known as the Russian Steppe (swamp land). The European cultures came into existence only 10,000 years ago, after the glacial melt.

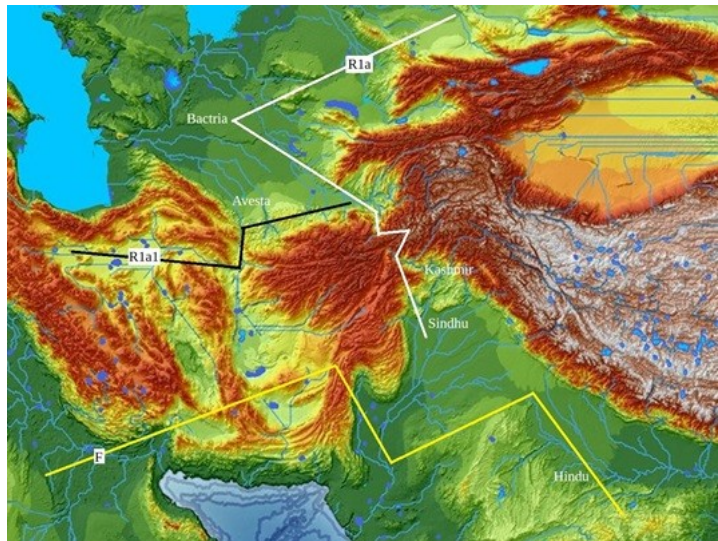
The cold climate people, the warmongers, did not understand the culture of the warm climate people. They deliberately and totally destroyed the peace loving cultures. It was their culture.

The current version of human history is that of the cold climate Europe Clade, as narrated by the Europeans. The story of the warm climate people is now lost. Their history is preserved only in their DNA.

Based on the DNA analysis of the Indian populations, we were able to reconstruct the lost history of the warm climate people, the Asia Clade. The other two Africa Clades (A, B, E) had similar fate, and are now lost in history.

The map shows migration paths of the Asia and Europe Clades, as revealed by the DNA samples of the Indian populations.

The yellow line shows the migration path of the Asia Clade (C, F). The C moved on to China. The F (Hindu) lived around the Mt. Trikuta of the Vindhya. They left Ethiopia (Africa) 100,000 years ago, as shown in the map above of Sapiens migration.



The Europe Clade (R1) was split into Eastern Europeans (R1a) and Persians (R1a1). They evolved in Europe only 10,000 years ago, from the Ice Age and Stone Age. They were the warmongering people constantly at war to rob each other. It was their culture. They invented the concepts of King, War, and God.

Around 2,200 BCE, there was a global drought that lasted for almost 200 years. Some of the R1 were forced to move south. They reached Bactria. The R1a lived in the North Bactria, and the R1a1 lived in the South Bactria, called Avesta. The R1a1 were split into Asura (R1a1) and Deva (Z93, R1a1-a1h). Culturally, the Asura and Deva were the exact opposites, and they hated each other.

Some R1a moved from Bactria to the Indus river. In the Avestan language, Indus was called Sindhu. The people who lived along the Indus (R1a) were called Sindhu. Avestans (R1a1) did not move to Sindhu. They were Persians, not Eastern Europeans.

Sindhu (R1a) and Avestans (R1a1, Z93) were Europe Sapiens, cold climate people. They lived in Bactria. They had nothing to do with Hindu (F), hot climate people, who lived only along the yellow line.

Deva (Z93) were expelled from Avesta by the Asura (R1a1) for vandalizing the Zend (Asura sacred books) to fictional Vedas to extort money from innocent people. Vedas, Yajna, and Deva for forbidden in Avesta. In the Avestan language, the word Deva was a synonym for unethical and immoral people. Deva were refugees in Kashmir. They were expelled around 500 BCE, according to an inscription discovered in 1935.

The people of the epic Mahabharata were Sindhu (R1a), not Hindu (F). The fictional Mahabharata was composed by the Deva refugees in Kashmir, and was financed by the Greek colonialists, to deliberately and totally destroy the ancient Hindu cultures. It falsely portrayed Sindhu (R1a) as Hindu (F). It actively promoted the Avestan Deva culture as the Hindu culture. Deva were ignorant of the Hindu culture. They were refugees living in Kashmir as social outcasts. They gained social status as the Greek stooges. They glorified themselves in superlatives in the fictional Mahabharata.

Parsis were the Asura (R1a1) of Avesta who sought refuge in the Gujarat State and Mumbai (Bombay), after Muslims occupied Avesta around 500 CE and forcibly converted people to Islam.

The current Indian population consists of only four Haplogroups: (1) Hindu (F), (2) Sindhu (R1a) also known as Mahabharata, (3) Asura (R1a1) also known as Parsis, and (4) Deva (Z93) also known as Kashmir Brahmin. The majority are Hindu (F). The R1a lived only along the Indus (Sindhu) river, the place of the Mahabharata war.

Parsis (Asura, R1a1) and Kashmir Brahmin (Deva, Z93) were the recent Avestan refugees. They are insignificant in number.

Hindu (F) have several subgroups: L, R2, H, J2b, and O. The L lived only on the West Coast, the R2 lived only on the East Coast, and the rest lived only at the foot of the Mt. Trikuta of the Vindhya.

DNA samples of the Indian populations have a fascinating story of the now lost human history to tell.