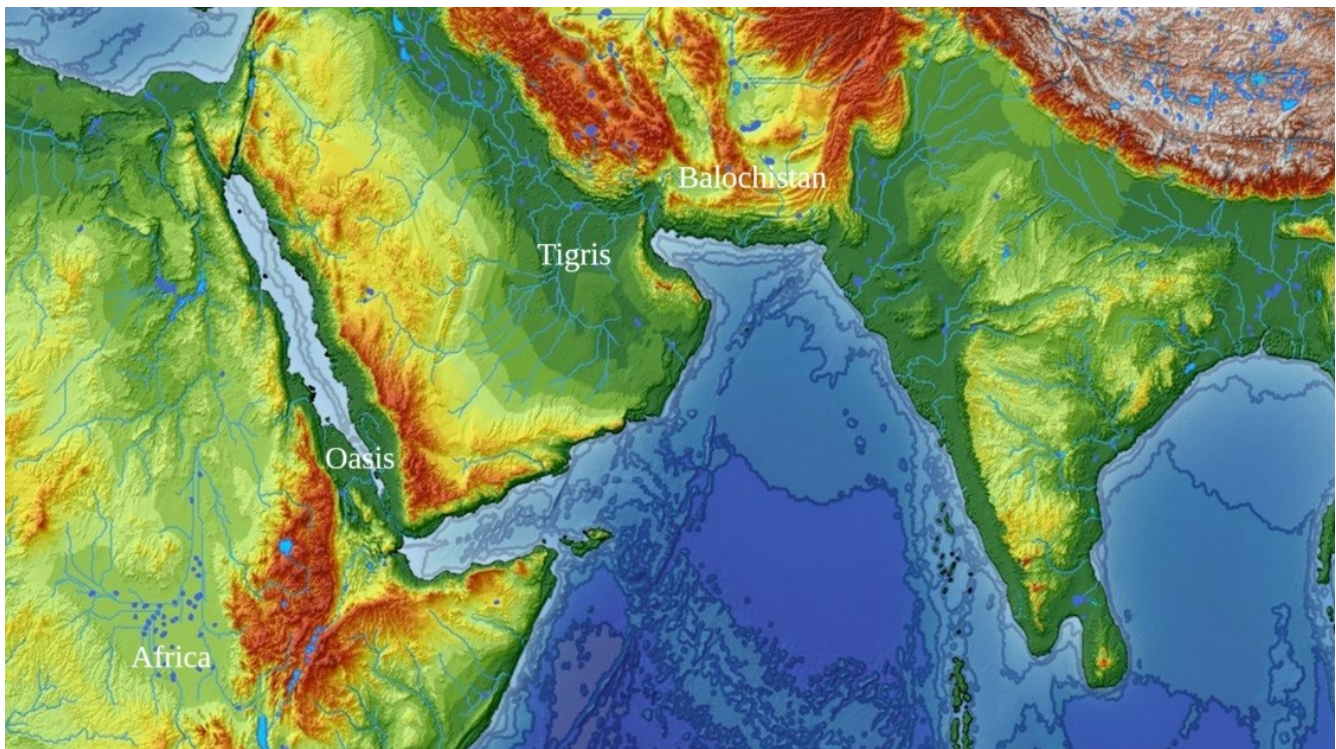


The Red Sea was a Lake, an Archeological View *by Potluri Rao In Seattle ©2018 (CC BY 4.0)*

It is generally taken for granted that the Red Sea was a sea of saltwater all along. The false assumption led to misinterpretation of human history. The Red Sea was a giant rainwater lake until as recently as 10,000 years ago.



The above map is a computer generated reconstruction of the landscape of 60,000 years ago when much of the world was covered with glaciers and the seawater was far below the current levels.

The Red Sea was a rainwater lake, an oasis. The mountain range to the west of the oasis separated Asia from Africa. Technically, the oasis was in Asia.

Homo Sapiens (Humans) evolved in Central Africa 200,000 years ago.

The natural oasis attracted Homo Sapiens from Ethiopia (Africa), 100,000 years ago. There was a pass with a string of lakes connecting Ethiopia and the oasis. The people who voluntarily moved to the oasis were Asians. They lost all contact with Africa, and evolved as an independent category of Homo Sapiens, the Asia Clade.

The Homo Sapiens in Africa were the Africa Clade, and the Homo Sapiens in Asia were the Asia Clade. They evolved on both sides of the mountain range as independent Clades.

People who share the same DNA are called a Haplogroup. The people who moved to the oasis were the C and F Haplogroups.

The C and F (Asia Clade) were at the oasis 100,000 years ago. At that time, much of the world was covered with glaciers and the seawater was far below the current levels. The current Persian Gulf was a fertile valley with a perennial rainwater river the Tigris. Balochistan was also a fertile valley with rainwater rivers. The land from the oasis to Balochistan was a giant fertile valley with perennial rainwater and abundant food resources. It was Asia, not Africa. Unlike Africa, Asia offered a stable and dependable climate for human settlements.

The Asia Clade (C, F) had nothing to do with Africa or the Africans. They left Africa 100,000 years ago. They had no reason to visit Africa. They evolved as an independent category of Homo Sapiens with their distinct culture. They were an advanced logic-based culture of adventurous visionaries, explorers, and pioneers who discovered the oasis.

The computer generated landscape of 60,000 years ago offers a different perspective of human history.

[Reading material](#)

[Home](#)