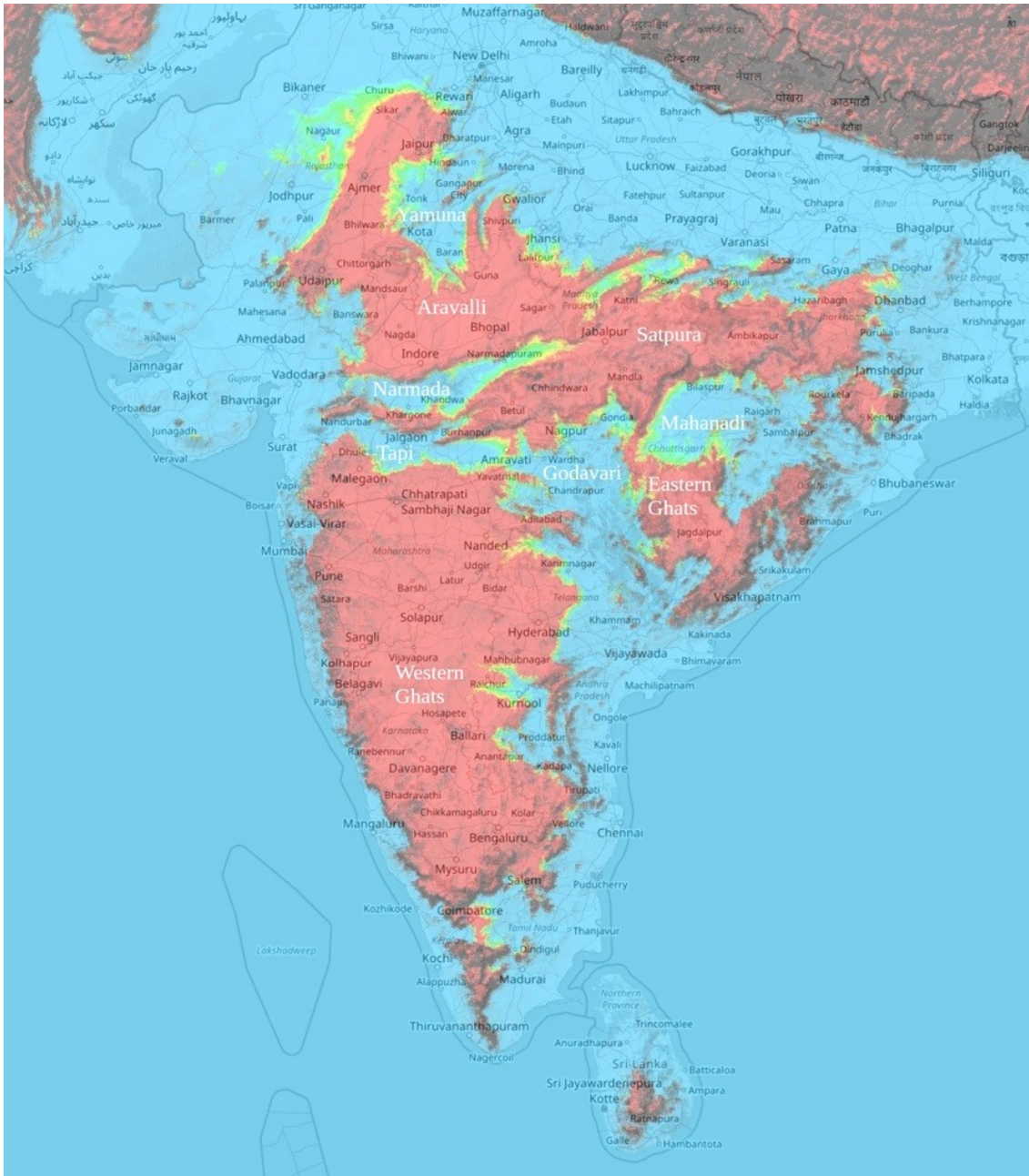
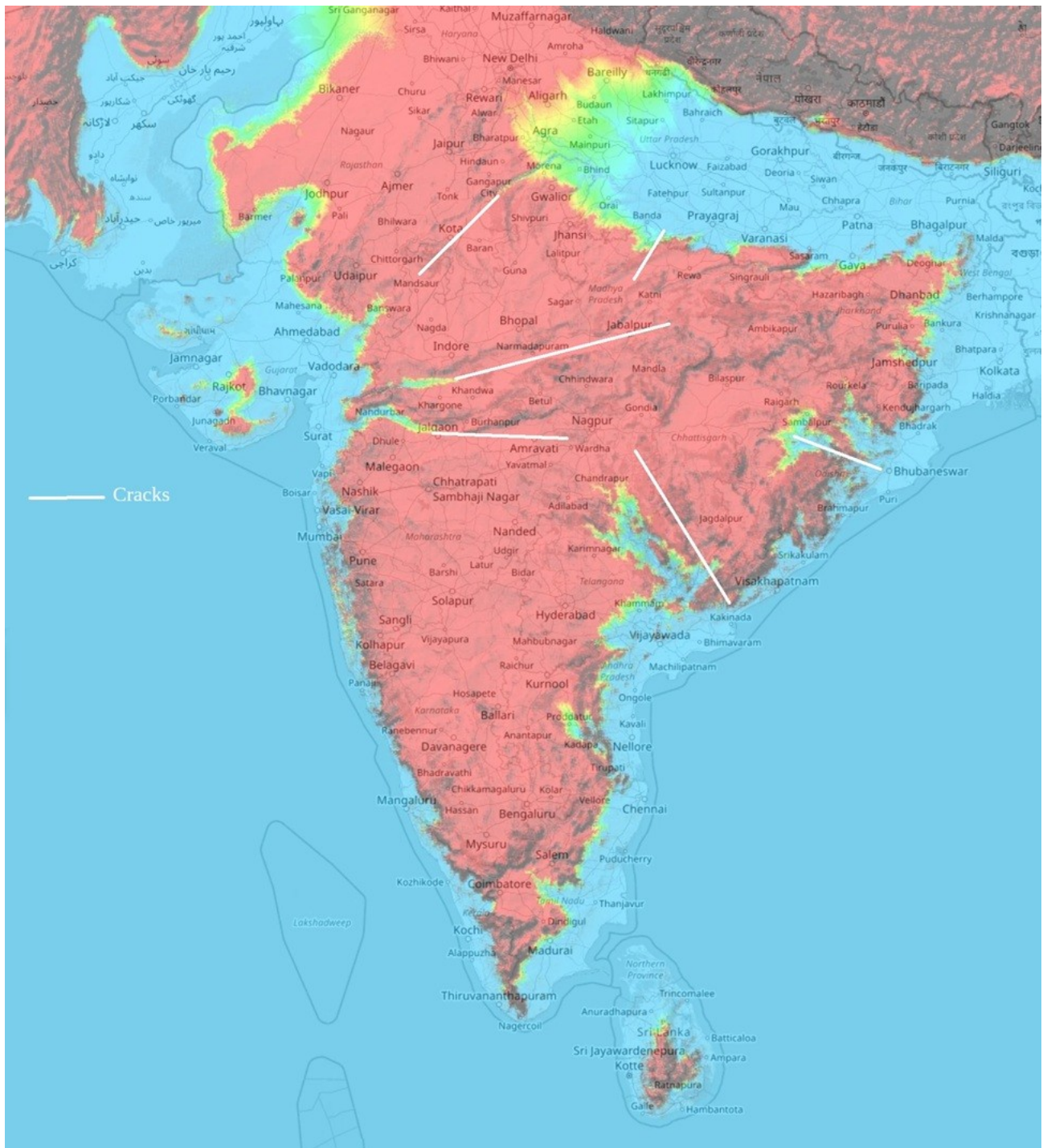


## Indian Subcontinent: An Archeological View by Potluri Rao In Seattle ©2018 (CC BY 4.0)

Originally, 100 million years ago, India was a part of Africa. It separated and drifted to form the current India. Approximately 50 million years ago, India collided with the Eurasian plate, which created the Himalayas. In the process, the drifting mountain ridge was cracked into pieces: Aravalli, Satpura, Eastern Ghats, and Western Ghats. The cracks were the Yamuna, Narmada, Tapi, Godavari, Ken, and Mahanadi rivers.





The cracks in the rocks testify to the ancient geological history of the subcontinent.

