

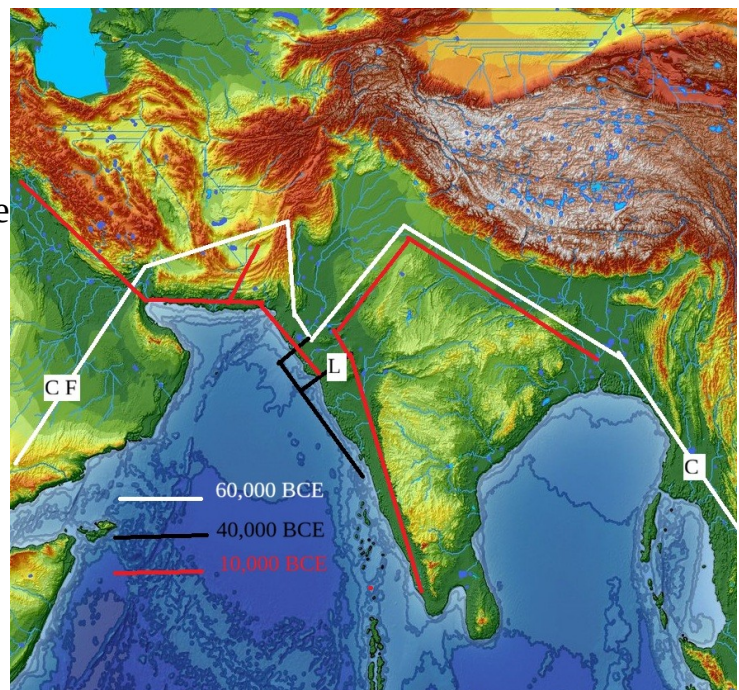
Brahui, Kurux, and Paharia Dialects: An Archeological View *by Potluri Rao In Seattle ©2018 (CC BY 4.0)*

The dialects Brahui, Kurux, Paharia, and Malto belong to the Malayalam family of the DNA L, who currently live in the Kerala State. Currently Brahui is spoken by a small group in Pakistan, and Kurux and Paharia are spoken by small groups in West Bengal. The Malto family of dialects is spoken in a wide area in Bangladesh.

The DNA L originally lived in the Rann of Kutch (Gujarat State) around 40,000 BCE. They were forced to move when the Rann of Kutch turned into a salt desert around 10,000 BCE. The glacial melt of 20,000 BCE changed the landscape.

The L was split into three different groups: (1) Kerala, (2) Mesopotamia, and (3) Bengal.

The DNA C and F were the Asia Homo Sapiens, warm-climate people, who voluntarily left Ethiopia in search of perennial rainwater resources around 100,000 BCE. At that time, much of the world was covered with glaciers, and the seawater was far below the current levels. The West Coast of India extended over 200 miles to reach the then Arabian Sea. The current Persian Gulf was a fertile valley. The C and F moved along the white line around 60,000 BCE to the east side of India, a giant fertile valley called Sunda. The C moved on to China. The F remained in India.

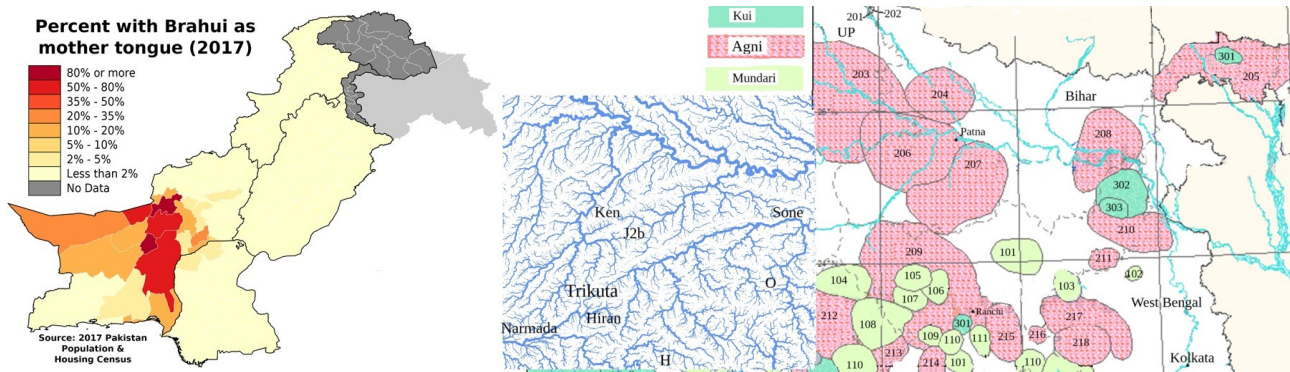


Around 40,000 BCE, there was a dramatic climate change, and Punjab turned into the Thar Desert. Some people moved south along the black line to find the Narmada delta along the Arabian Sea. They were the DNA H and L. They were siblings and spoke the Kui language. The H lived on the Narmada delta along the Arabian Sea coast. The L lived in the Rann of Kutch. They were rainwater people. The Narmada was a rainwater river. They avoided the Indus River of snowmelt water like the plague. The white line was along rainwater tributaries of the Indus that are now dried out.

Around 20,000 BCE, the glaciers started to melt. The H on the Narmada delta moved along the river to its headwaters, Mt. Trikuta of the Vindhya. The L was at a slightly higher elevation. By 10,000 BCE, the L were forced to vacate. Some of the L moved to Mesopotamia. Some moved to Balochistan, current Pakistan. At that time, the Thar desert became a fertile valley again. The dried-out rainwater tributaries of the Indus resurfaced. Some of the L moved along the old white line only up to Bangladesh. By then, Sunda was submerged. The rest of the L moved south along the coast to Kerala State.

The following sentences are expressed in English, Brahui, and Malayalam.

English	Brahui	Malayalam
-----	-----	-----
What is your name?	Na pin anth e?	Nin per enth aan?
Where are you?	Nee arade saa?	Nee evide aan?
What did you say?	Nee anth pares?	Nee enth paranju?



The map on the left shows the density of Brahui according to the Pakistan Census 2017. The map on the right is the density of Kui, Agni, and Mundari dialects according to the India 2011 Census. The green Kui dialects 301, 302, and 303 are, respectively, Kurux, Sauria Paharia, and Kumarbhag Paharia of the Malto family.

In India, outside of the West Coast, DNA L samples are found only in the Kurux, Paharia, and Malto populations.

Genetically, the Malayalam in Kerala State, the Sumerians in Mesopotamia, the Brahui in Balochistan, and the Malto in Bangladesh were the same people. They lived in the Rann of Kutch from 40,000 BCE to 10,000 BCE. They were separated around 10,000 BCE when the Rann of Kutch became a salt desert.

The following is a table of DNA samples collected in Bangladesh and Balochistan. The numbers are expressed as a percent of the sample size.

Population	Samples	H	J	L
Tripuri (Bangladesh)	107	3.53	10.59	65.88
Chakma (Bangladesh)	116	4.31	10.34	52.59
Khasi (Bangladesh)	90	3.92	9.80	45.10
Rakhine (Bangladesh)	107	6.54	13.08	29.91
Manipuri (Bangladesh)	102	2.22	11.11	25.56
Balochi (Balochistan)	25	4.00	16.00	24.00
Bengalis (Bangladesh)	649	17.72	15.72	17.41

