

Ghaggar River: An Archeological View

by Potluri Rao In Seattle ©2018 (CC BY 4.0)

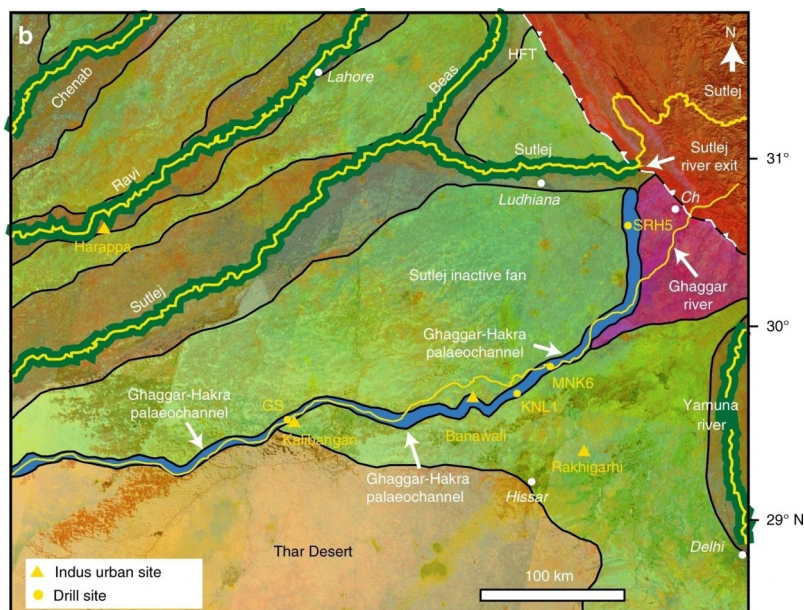
The Ghaggar River in the Himachal Pradesh and Haryana states is seasonal and has water only during the rainy season. Sixty thousand years ago it was a perennial rainwater river; it was the home of Hindus (DNA F) who voluntarily moved from Somalia. The excavation sites found in the land between the rivers Sutlej and Yamuna have a fascinating story to tell of Hindus who lived there.

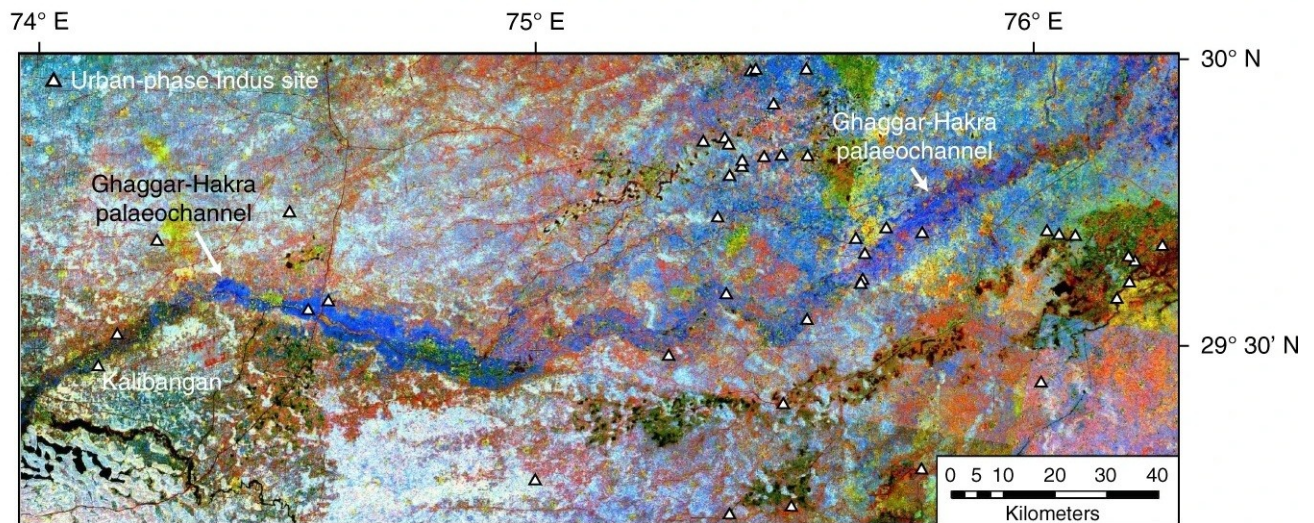
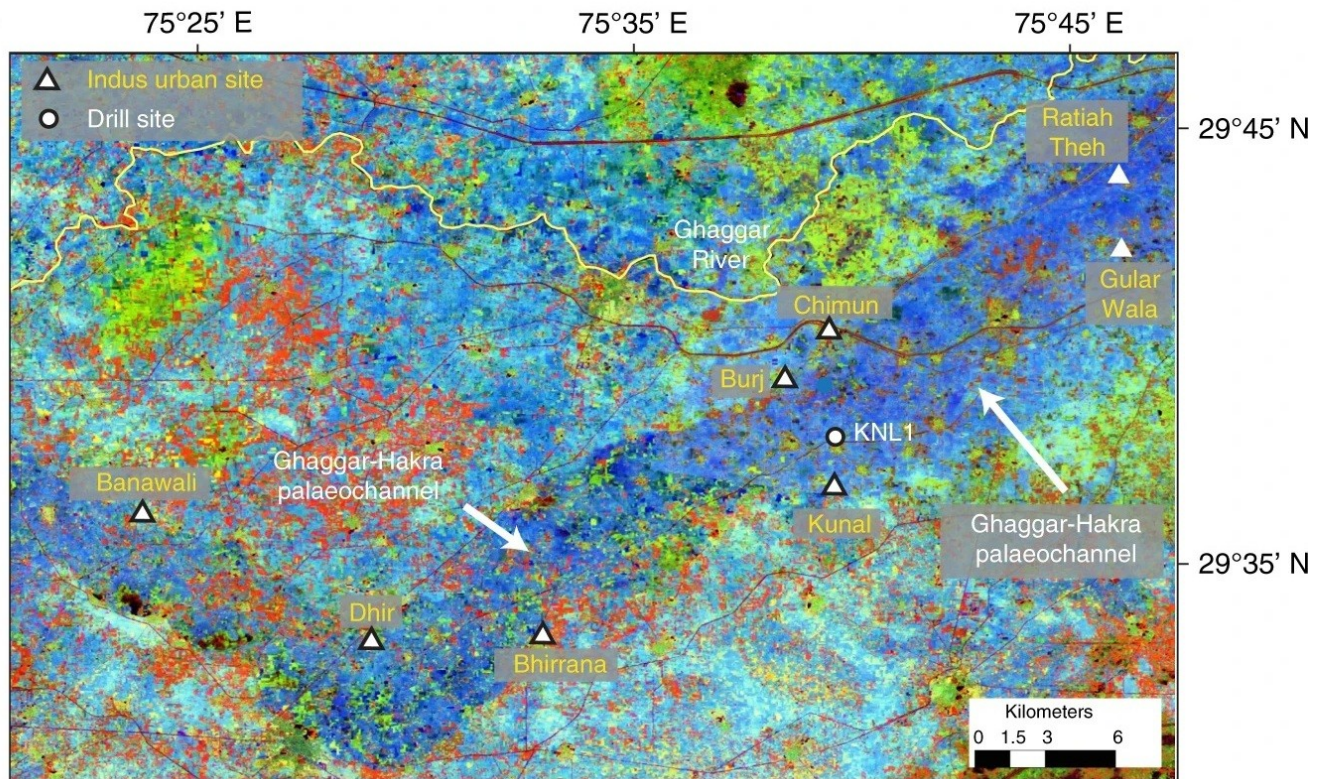
Earth's Axial Precession and Tilt cause 41,000-year cycles of monsoon winds that go from the Arabian Sea to the Bay of Bengal. For 20,000 years the winds have gone in summer from west to east; for the next 20,000 years they reversed direction and have gone in winter from east to west. When the monsoon winds went from west to east, the Ghaggar land was a fertile valley. When the winds reversed, it was deprived of rainwater. The last monsoon wind reversal was 4,000 years ago. Currently it is a vast wasteland.

The following images are from a recent study of core samples along the Ghaggar River (Ajit Singh, 2017, Nature Communications | DOI: 10.1038/s41467-017-01643-9).

In the map notice the location of the excavation sites Harappa, Kalibangan, and Rakhigarhi. Harappa is along the Ravi, a rainwater river. Kalibangan is along the Ghaggar, a rainwater river. Rakhigarhi is along a rainwater tributary of the Ghaggar.

The Indus and Sutlej originated in the Himalayan glaciers and carry snowmelt water. They are flood-prone, unstable, and constantly change course in their flood basins. They were avoided by Hindus like the plague. Hindus lived only along the rainwater tributaries that are now partially or totally dried out. When the monsoon winds reversed direction and the rainwater rivers dried out, they moved east to follow the perpetual rainwater Yamuna River.





In the above maps notice that all the excavation sites are only along the now dried-out rainwater rivers. The core samples revealed that the sediment layers at the excavation sites belonged to rainwater, not snowmelt water. The rainwater rivers were active every other 20,000 years. Hindus lived along the Ghaggar River 20,000 years ago and 60,000 years ago.