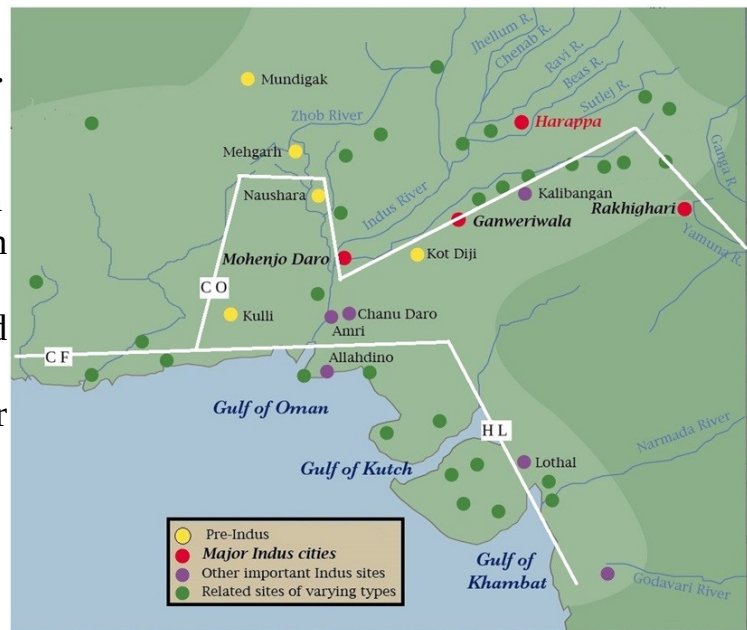


Indus Valley: An Archeological View

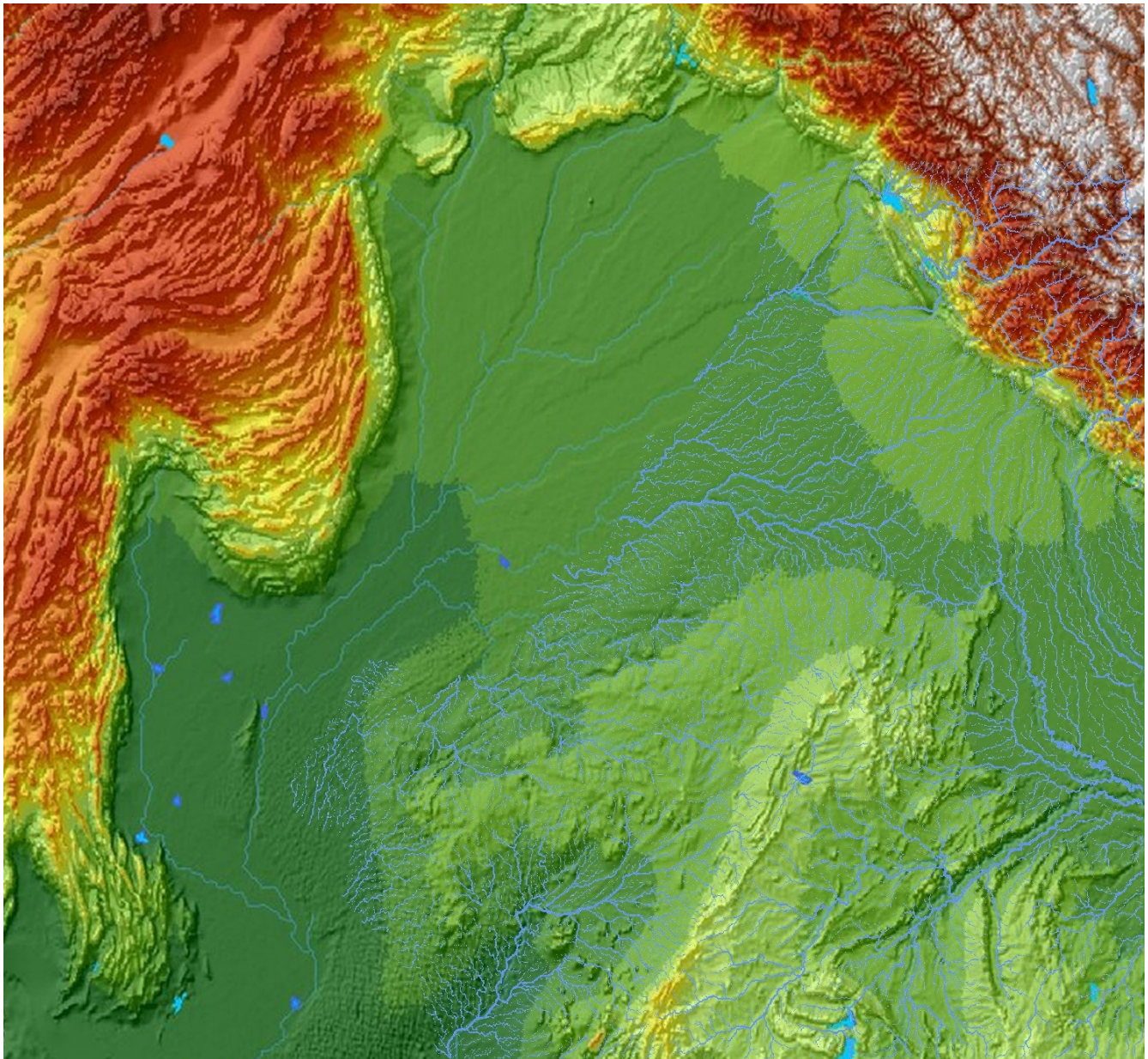
by Potluri Rao In Seattle ©2018 (CC BY 4.0)

Sixty thousand years ago, much of the world was covered with glaciers, and the seawater was far below the current levels. It was a different climate and landscape. At that time, the Persian Gulf and Thar deserts were fertile valleys that attracted humans from Somalia. The area to the east of the Red Sea is called Asia. The people who lived in the Persian Gulf were the DNA C and F, the Asian Homo Sapiens; they had nothing to do with the African or European Homo Sapiens. The C moved on to China. The F lived only in India. The F were subdivided into H, L, and O. The C and O moved to the Bay of Bengal; the H and L moved to the West Coast of India.

The C and F were highly advanced cultures. They were rainwater people. They lived only on lowlands of perennial rainwater rivers. They scouted far and wide and discovered a continuous path of rainwater as shown by the white line in the map. At that time, the Indus had both rainwater and snowmelt water tributaries; the rainwater tributaries are now totally or partially dried out. The Ravi was a rainwater tributary. Harappa was along the Ravi. People who were ignorant of geology made the false assumption that it was on the Indus River and invented a false theory of the Indus Valley Civilization. The Indus and Sutlej were snowmelt water rivers; the C and F avoided them like the plague. People who lived along the Indus and Sutlej were the recent European (DNA R1) immigrants of 4,000 years ago.



The excavation sites as shown in the map were only along the rainwater tributaries that are now dried out. When the rainwater tributaries dried out due to climatic change, people preferred to move east to the Bay of Bengal along the Yamuna River. They avoided the snowmelt water tributaries of the Indus.



The above map is a digital reconstruction of the landscape of 60,000 years ago when the C and F lived there. Notice that the Indus River had an entirely different path than the current one. The current Indus is an avulsion carved out recently. Mohenjodaro was along a now dried-out rainwater river, 100 miles to the west of the ancient Indus. The current avulsion goes right through Mohenjodaro. Harappa was along the Ravi River, not the Indus. Kalibangan and Rakhigarhi were along a now dried-out rainwater tributary.

The archeological evidence has a different version of human history to tell.